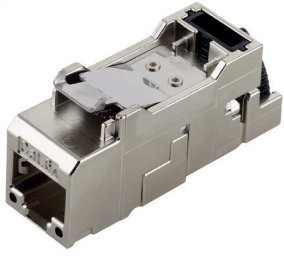


RJ45F CAT.6A



Application advantage

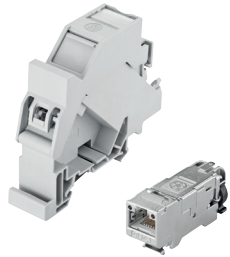
- Suitable for solid and stranded conductors
- Die-cast zinc housing
- Color-coded to PROFINET® standards
- Supports 10 Gigabit Ethernet
- Conforms to IEC 60603-7-51

Approvals



Part number	Color code	Conductor size		Max. cable outer diameter	
		stranded	solid	in	mm
21700611	T568A	27 - 22 AWG (7 wire)	26 - 22 AWG	0.354	9.0
21700612	T568B	27 - 22 AWG (7 wire)	26 - 22 AWG	0.354	9.0

HS RJ45F CAT.6A



Application advantage

- Suitable for solid and stranded conductors
- Color-coded to PROFINET® standards
- Integrated strain relief for cables (OD up to 9 mm)
- Supports 10 Gigabit Ethernet
- Conforms to IEC 60603-7-51

Approvals

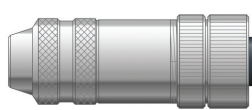
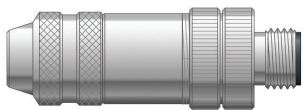


Part number	Color code	Conductor size		Cable outer diameter	
		stranded	solid	in	mm
21700613	T568A	27 - 22 AWG (7 wire)	26 - 22 AWG	0.197 - 0.354	5.0 - 9.0
21700614	T568B	27 - 22 AWG (7 wire)	26 - 22 AWG	0.197 - 0.354	5.0 - 9.0

M 12 field wireable connectors

male

female



Application advantage

- Shielded design
- IP67 protection

Part number		Number of positions	Thread size	Max. conductor size	Cable outer diameter	
male	female				in	mm
C5E201C	C5E200C	8	PG 9	18 AWG	0.234 - 0.312	6 - 8

Technical data

🌡️	Temperature range:	max. 85°C
⚡	Nominal voltage:	up to 60V
📶	Nominal current:	up to 4A

PROFINET® is a registered trademark of the PNO (PROFIBUS User Organization).
If not otherwise specified, all values relating to the product are nominal values.
Photographs are not to scale and are not true representations of the products in question.